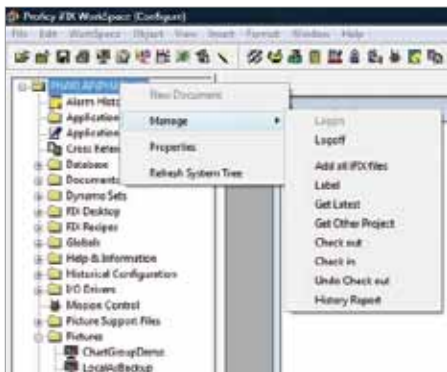




GE Change Management and GE iFIX

GE iFIX and GE Change Management together provide a powerful way to manage your GE HMI/SCADA applications and ensure you never experience lost files or the inability to recover from a disaster again.



GE Change Management provides the functionality to manage and maintain programs and projects in a manufacturing environment to improve plant uptime, enforce good engineering practices and reduce risk. Using version control, security, audit trailing, and scheduled verifications, you can get a handle on what's happening in your plant.

GE Change Management is also designed to be open and flexible, interfacing with a variety of software and hardware products from various vendors in the automation industry, including GE, Rockwell, Siemens, Schneider and more.

Manage Your iFIX Projects

GE Change Management ensures that all your nodes are using the most current version of an iFIX application and uses a check out/check in process, whereby only one person can modify a picture, database or other file at a given time. The system also maintains a version history, so if undesired changes are made, you can recover a previous version with the click of a button.

All this happens from your iFIX Workspace. The System Tree has been enhanced to provide access to all components of your applications. Change Management is available at the project and component level. Manage your tag database, pictures, documents, recipes, I/O drivers, reports, application files and more.

GE Change Management allows you to easily manage your projects in a multi-user development environment. Multiple users can access different parts of the same application during development, while ensuring people don't overwrite each other's work.

Track Changes and Revisions

GE Change Management provides a version control system that maintains a history of changes at both the project and component level. As changes are made to components, and checked in, new versions are automatically created. This version history provides traceability, tracking who made changes and when, as well as the ability to revert back to previous versions if needed, ensuring that you can recover from inadvertent or incorrect changes quickly and easily.



The system maintains the concept of a master version on the server. The master version is the version of the files that should be running on the master node. Using the difference function, you can compare the node files to the master files and determine if there are any changes. You can also compare any two versions of the files to determine what changes were between them.



GE Change Management and GE iFIX



Details of differences are provided in a text format so you can see what has been added, modified, or deleted.

System Requirements

GE iFIX Version 4.0 or later

GE Change Management Server and Scheduler

Detailed Audit Trails

The GE Change Management system records each time a project is accessed in a central audit trail. The system tracks which users are modifying what components within your iFIX project. It records the date, time, user, computer location and project, along with any comments supplied by the user. This provides you with the ultimate in traceability on changes for your application.

User	Date	Time	Computer Location	Project	Comments
ADMINISTRATOR	12/22/2015	10:00:00 AM	ADMINISTRATOR	ADMINISTRATOR	ADMINISTRATOR
ADMINISTRATOR	12/22/2015	10:00:00 AM	ADMINISTRATOR	ADMINISTRATOR	ADMINISTRATOR
ADMINISTRATOR	12/22/2015	10:00:00 AM	ADMINISTRATOR	ADMINISTRATOR	ADMINISTRATOR

Security

GE Change Management works with your iFIX security, or you can use Windows security and take advantage of your existing IT configuration to ensure that only those users that are allowed to make changes can make changes.



Electronic Signature

The Electronic Signature capability is ideal for regulated environments. With Electronic Signature enabled, all changes need to go through an authorization process, giving you more control over changes. The electronic signatures can be configured for authorization and user verification.



Scheduled Backup and Compare

The GE Change Management scheduler allows you to confirm that the iFIX application running on a node matches the master version on the server on a scheduled basis, ensuring that unauthorized changes are detected. With a backup of your running systems, you can recover from errors or system failures quickly and easily.

About GE

GE (NYSE: GE) is the world's Digital Industrial Company, transforming industry with software-defined machines and solutions that are connected, responsive and predictive. GE is organized around a global exchange of knowledge, the "GE Store," through which each business shares and accesses the same technology, markets, structure and intellect. Each invention further fuels innovation and application across our industrial sectors. With people, services, technology and scale, GE delivers better outcomes for customers by speaking the language of industry. www.ge.com

Contact information

Americas: 1-855-YOUR1GE (1-855-968-7143)
gedigital@ge.com

www.ge.com/digital



©2015 General Electric. All rights reserved. *Trademark of General Electric. All other brands or names are property of their respective holders. Specifications are subject to change without notice.