

GE iFIX 5.8

Innovation that Drives Results

Benefits

- More flexibility for your applications
- Enables a first step toward Real-time Operational Intelligence (RtOI)
- Increased collaboration through thin and mobile
- Seamless integration with GE Workflow to guide your operators based on real-time events
- Shorter time to solution
- Reduced maintenance costs
- New OS support minimizes risk of obsolescence

New Features

- Supports dynamic resolution for graphics
- More efficient graphic rendering – 1/3 less CPU usage
- SCADA publishing to the Model
- Support for read/write to iFIX from GE Workflow

Building on a track record of success and continual enhancements, the latest release of GE iFIX is here and takes HMI/SCADA to the next level!

iFIX is a superior proven real-time information management and SCADA solution, which is open, flexible and scalable. It includes impressive, latest-generation visualization tools, a reliable control engine, and more.

Like never before, this best-in-class software enables you to drive better analytics and leverage more reliability, flexibility, and scalability across your enterprise.

Enhanced Graphics, Performance, and Scalability

iFIX now supports dynamic resolution for graphics, including more efficient rendering and reduces CPU footprint. This capability allows support for deploying iFIX graphics on widescreen monitors, LCD TVs, and different aspect ratio screens, as well as the ability to move iFIX graphics from one resolution to another.

Current iFIX users who have developed graphics on 4:3 ratios will see a border on the two sides of graphics that are moved to widescreens, as iFIX maintains the aspect ratio and centers it on the screen. Any new graphics developed on widescreens will fill the entire space.

With iFIX 5.8, you can decide when and how many graphics you want to convert. This version allows existing applications to run in a mixed mode of new and old graphic coordinate systems. Any newly developed graphics automatically use the new coordinate system. iFIX 5.8 does not convert existing graphics by default – only when you want to convert.

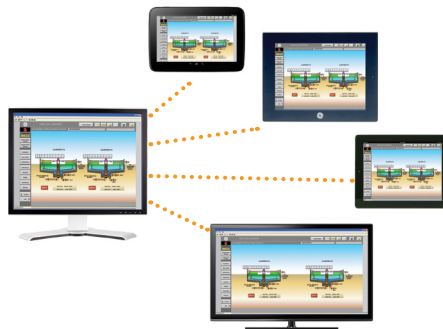
Improved Reliability and Security

If you require high availability solutions, iFIX 5.8 provides enhanced failover capabilities:

- Higher speed of alarm distribution on failover
- Improved maintenance mode
- Support for I/O driver access timeout on failover

For improved security, iFIX 5.8 offers:

- iFIX networks support encrypted authentication keys
- Webspace sessions support 256-bit encryption and have a “sandboxing” feature. This provides the capability to whitelist applications for Webspace sessions to prevent unauthorized access.



GE iFIX 5.8 Innovation that Drives Results

Enabling Real-time Operational Intelligence (RtOI)

With iFIX, you can publish to the SOA model, making the information available to the GE Application Server (PAS) and GE Mobile. iFIX also supports read/write functions to iFIX from GE Workflow.

Additionally, it has never been easier to build a Real-time Operational Intelligence solution, starting with your existing HMI/SCADA and delivering value to users by leveraging the structured model of PAS, KPIs and trends at your fingertips, anytime anywhere, from any device.

GE Historian for SCADA Now Part of iFIX

Every version of iFIX is delivered with GE Historian for SCADA. It comes with 2,500 buffered tags for real-time trending and a 200-day circular buffer. GE Historian drives advanced capabilities for your HMI by delivering superior performance. It is easy to set up and configure. Our most powerful solutions and advanced analytics use GE Historian as their foundation.

New Operating Systems Support

The GE iFIX 5.8 release provides support for Microsoft® Windows®

8 and Server 2012. It also supports SQL Server 2012.

Currently iFIX will not support Environment Protection for iFIX Graphics in runtime while running on Windows 8 and Server 2012. It will be made available through a SIM.

Unified WebSpace

The new version of WebSpace provides a single server to render GE iFIX, GE CIMPPLICITY and GE Plant Applications displays.

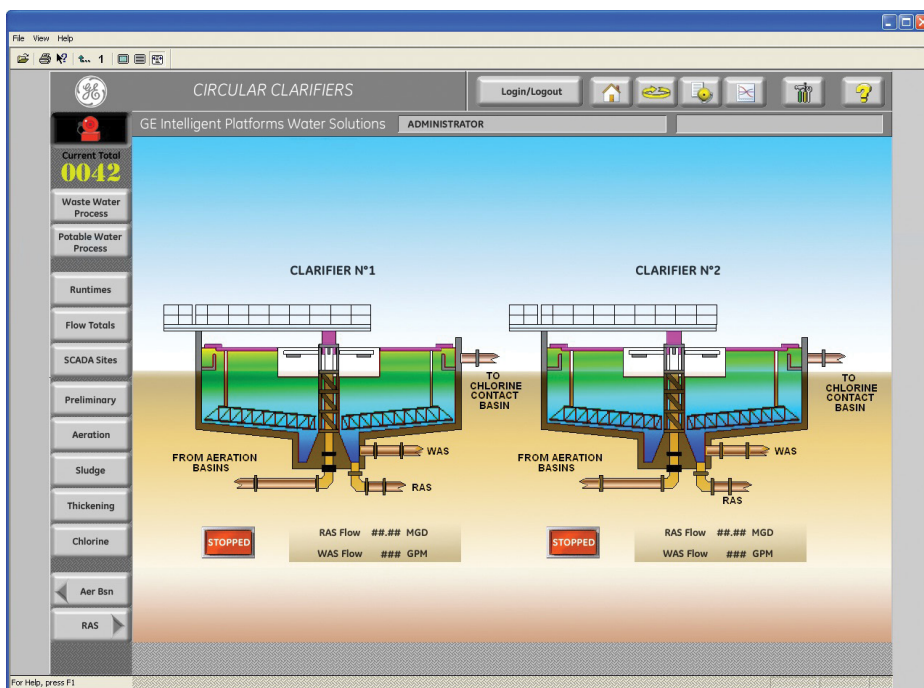
Industry-Leading HMI/SCADA – Thousands of Successes Around the World

As best-in-class HMI/SCADA software, iFIX offers a robust SCADA engine, rich set of connectivity options, open architecture, and highly scalable and distributed networking model.

Used in a variety of diverse industries, iFIX is ideally suited for many applications – ranging from typical HMI as simple as manual data entry and validation... to very complex SCADA such as batch, filtration and distributed alarm management.

This proven and award-winning software also complies with industry standards, making it ideal as part of an IT-focused, real-time data management system.

Providing a window into your total operations cycle, iFIX enables faster, more intelligent control and visibility into your operations.



For more information, visit www.ge.com/digital

About GE

GE (NYSE: GE) is the world's Digital Industrial Company, transforming industry with software-defined machines and solutions that are connected, responsive and predictive. GE is organized around a global exchange of knowledge, the "GE Store," through which each business shares and accesses the same technology, markets, structure and intellect. Each invention further fuels innovation and application across our industrial sectors. With people, services, technology and scale, GE delivers better outcomes for customers by speaking the language of industry. www.ge.com

Contact information

Americas: 1-855-YOUR1GE (1-855-968-7143)
gedigital@ge.com

www.ge.com/digital

©2015 General Electric. All rights reserved. *Trademark of General Electric. All other brands or names are property of their respective holders. Specifications are subject to change without notice.

