

## Overview

**Star Controls** offers the latest in advanced security monitoring and control solutions that integrate seamlessly with Sierra Wireless products, providing cost effective, secure high-speed communications and simple monitoring solutions.

## Advanced Distribution Automation RTU

### Connect to or operate as:

- Switch RTU
- Feeder RTU
- Capacitor Bank
- General RTU

### Local Control and Monitoring Features:

- Real-time data monitoring
- Historical data storage
- Advanced programming capabilities
- Connectivity to multiple IEDs
- Optional touch-screen interface

### Local Connectivity:

- DNP3.0/MODBUS master or slave to Serial/Ethernet devices
- Local Touchscreen

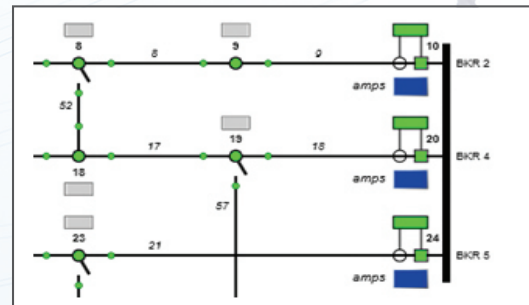
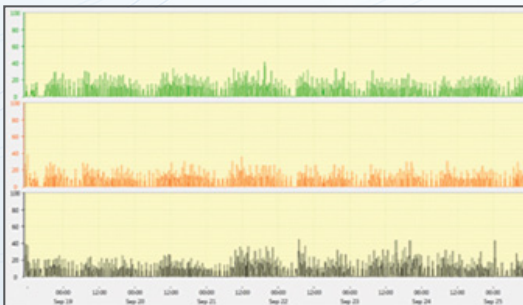
### Communication Protocols , Cyber Security and Interfaces:

- DNP3.0 Master/Slave, Motorola MDLC protocol
- Full-fledged (end-to-end) Cyber Security
- Cellular networks
- Private/Public Wireless Radio networks;  
Conventional, P-25 and Analog Trunking
- Fiber Optics, PLCC and Line
- LAN/WAN



**SIERRA**  
WIRELESS™

Solution Partner







### I/O & DATA MAINTENANCE STATISTICS

**StaRTU®** maintains diagnostics for all I/O points monitored. These diagnostics include daily and monthly counters, max and mins, and other information. The statistics can be viewed with standard toolbox software and are instrumental in system troubleshooting.

### CELLULAR MODEM DIAGNOSTICS

**StaRTU®** polls the Cellular modem for diagnostics such as RSSI and Data Usage.

### FLASH DATA STORAGE

**StaRTU®** saves data in local flash memory, and restores it following power-loss and/or new application download. This feature virtually eliminates the risk of losing RTU data.

### HASSLE FREE UPGRADE

New **StaRTU** firmware releases are fully compatible with existing programs. When new features are released, users need only download the new C file into the RTU, and it is fully compatible with the existing application, including any changes made to the user process.

### SIMPLICITY

A typical **StaRTU®** system consists of a single site configuration, a ladder (C) application, and then small site-specific customization text files. The user does not need to define the I/O modules, as the system can determine what is physically installed. There is no need for users to link and compile different configurations and files! **StaRTU®** provides essential inventory and version control reporting features. The RTU firmware version, RTU type, I/O module configuration, and other information are reported directly to SCADA. This feature enables convenient tracking of system and software changes, as well as serves as a helpful asset management tool.



© Star Controls, Inc. All rights reserved.  
StaRTU® a registered trademark of Star Controls, Inc.  
v0116

Tel: 1 + 954.603.0491  
Fax: 1 + 954.603.0492  
sales@star-controls.com

[www.STAR-CONTROLS.com](http://www.STAR-CONTROLS.com)

11555 Heron Bay Blvd, Suite #200  
Coral Springs, Florida 33076 USA